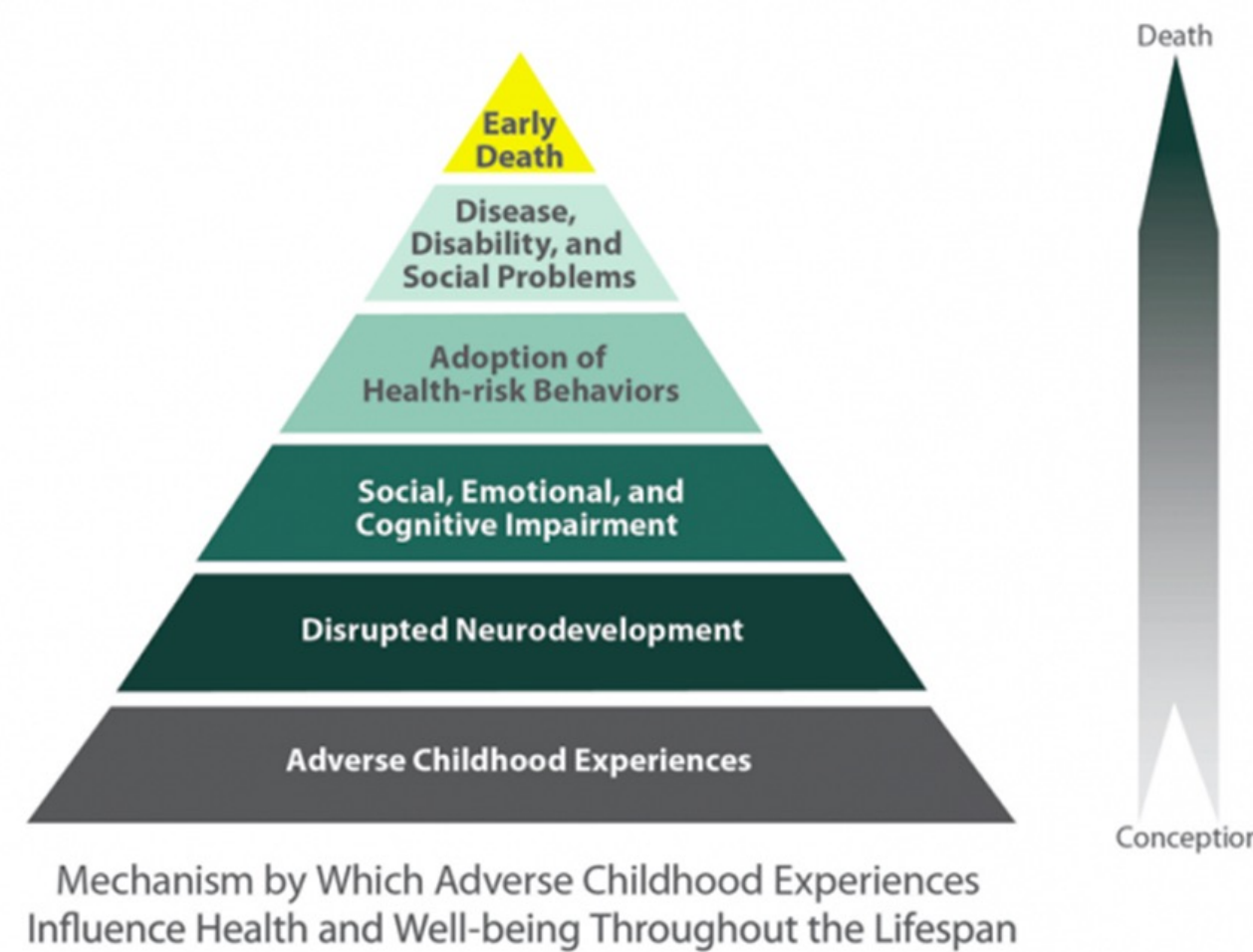


Social Determinants of Health among families seeking emergency care

Spencer Buted, Kathleen Adelgais MD MPH, Carl Elston
 University of Colorado School of Medicine

Background

- Children and families with unfavorable SDoH are at high risk for adverse childhood events (ACEs).
- Inequities in SDoH lead patients and families to seek care through the Emergency Medical Services (EMS).
- Recognition of family SDoH and service needs by EMS clinicians are not known



Objective

To compare service needs and self-reported elements of SDoH among families seeking emergency care either by EMS or private vehicle to an emergency department

Methods

Design/Setting

- Cross-sectional survey of caregivers who seek emergency care
- 19 items across multiple domains of SDOH
- Dyads of caregivers and EMS clinicians

Outcomes

- Types of service needs
- Number of service needs
- Likelihood of connecting with services
- EMS detection of caregiver SDOH

Analysis

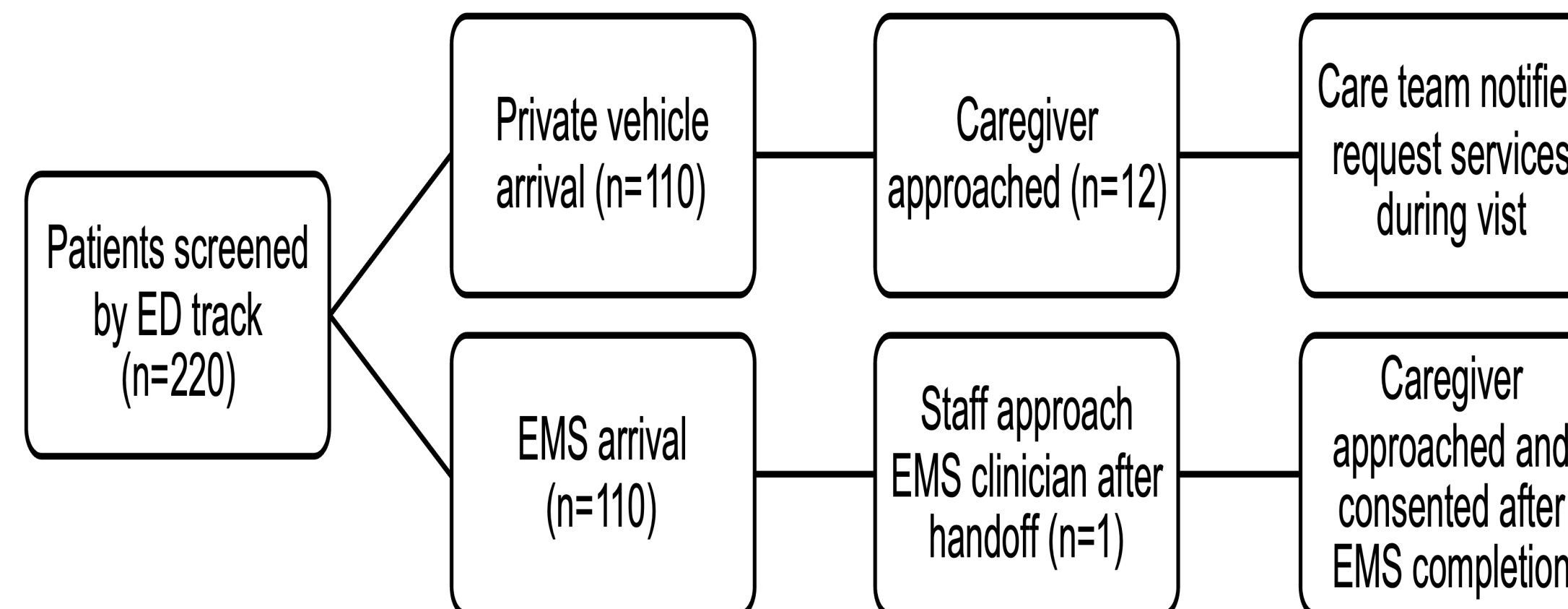
- Descriptive statistics stratified by arrival type and dyads of caregivers and EMS clinicians.
- T-tests and chi-squared tests assessing the difference between groups
- Inferential statistics will be used assess service needs based on caregiver demographics.

Data/Results

Needs Assessment

- 19 items assessing multiple domains of social service needs including:
 - Mental Health
 - Food insecurity
 - Housing insecurity
 - Access to transportation
 - Chronic medical conditions in household members
- 13 services participants can indicate would be helpful for them
- Willingness for families to accept services using a Likert scale from 1-5

Enrollment



Conclusions

- Preliminary data indicates caregivers are willing to provide information on service needs
- A larger population is needed to conclude on differences in service needs by arrival type and assess the degree of accurate social needs detection by EMS.

Implications

- Implementation of evidence-based protocols into EMS response workflows
- Research is needed to understand SDOH detection and service needs acceptance by families requiring EMS transport

References

- Riney LC, Brokamp C, Beck AF, Pomerantz WJ, Schwartz HP, Florin TA. Emergency Medical Services Utilization Is Associated with Community Deprivation in Children. *Prehosp Emerg Care.* 2019 Mar-Apr;23(2):225-232
- Greene HM, Maguire-Jack K, Malthaner L, Truelove A, Leonard JC. The relationship between emergency medical services use and social service needs in a pediatric emergency department population. *Child Abuse Negl.* 2022 Jan